

oakheart

£240,000

Guide Price

Victoria Road, Chelmsford



Smack in the heart of the action on Victoria Road, this sleek one bedroom first-floor apartment isn't just a place to live, it's your front-row ticket to urban cool. Whether you're snapping up your first pad, securing a smart investment, or carving out the ultimate pied-à-terre for effortless city escapes, this is the spot that checks every box. Meticulously cared for by an owner who barely used it, this 2022 built gem is in pristine, move in ready condition, literally unpack and start living. Best part? It comes with a transferable new homes guarantee of around six years remaining, giving you serious peace of mind and that

fresh-build edge.

Step inside to a smart central hallway packed with clever storage, which flows straight into a stylish open-plan living space that's equal parts chill sanctuary and effortless entertaining space—perfect for low key nights or hosting friends, no clunky washing machine vibes here: it's neatly tucked away in its own hallway cupboard, keeping everything sleek and serene.

The generous bedroom feels like a private retreat, complete with fitted

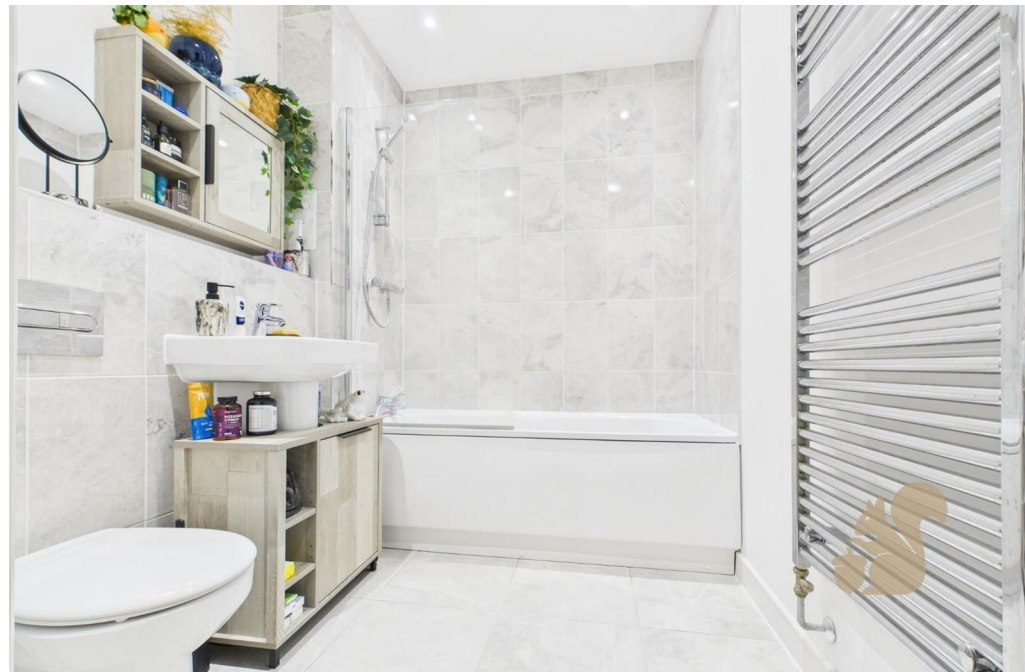
wardrobes and plenty of room for a sleek home workspace setup. The bathroom, finished with contemporary tiling, clean lines and a modern finish.

But the real showstoppers? Your own private balcony for morning coffee, plus easy access to expansive communal grounds—a real urban oasis that would be pure summer magic in a discreet area when the public wouldn't know existed

This isn't just an apartment. It's your stylish, low-maintenance launchpad to everything the city centre has to offer. Ready to make it yours?









Local Authority:


Tenure:

Leasehold

Council Tax Band:

C

Energy Efficiency Rating

	Current	Potential
<i>Very energy efficient - lower running costs</i>		
(92 plus) A		
(81-91) B	82	82
(69-80) C		
(55-68) D		
(39-54) E		
(21-38) F		
(1-20) G		
<i>Not energy efficient - higher running costs</i>		
England & Wales	EU Directive 2002/91/EC	

Agents Note: Whilst every care has been taken to prepare these particulars, they are for guidance purposes only. All measurements are approximate and are for general guidance purposes only and whilst every care has been taken to ensure their accuracy, they should not be relied upon.

Oakheart Chelmsford
01245 800181
chelmsford@oakheart.co.uk
20 Victoria Road, Chelmsford, Essex, CM1 1PA

oakheart